

# Raynesys 6 Sided Gazebo Tent

---

## User Manual



Quick Setup



Private Space



Breathable



UPF 50+



UVA 99%



Windproof



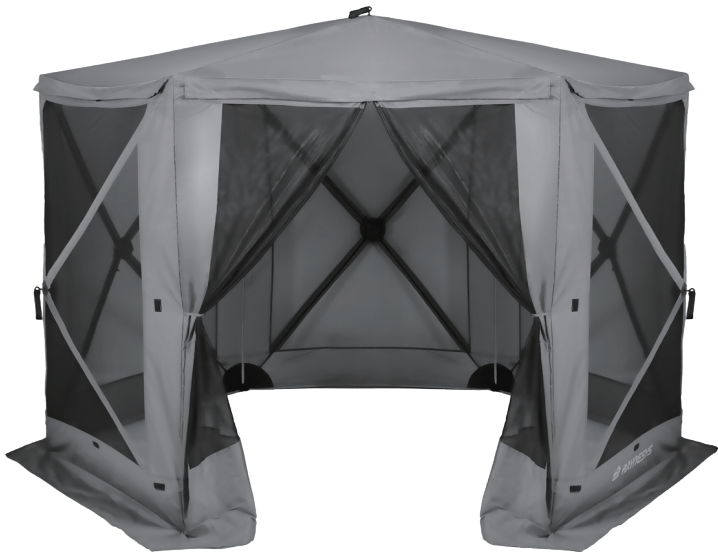
Waterproof



Mosquito-proof

# Specification

<b>Product:</b> Pop-Up 6-Sided Gazebo Tent		<b>Material:</b> 210D Waterproof Polyester PU2000+
<b>Size:</b> 9.5*9.5*7.2ft	<b>Capacity:</b> 4-6 Persons	<b>Weight:</b> 24.25lbs/11kg
<b>Size:</b> 11*11*7.5ft	<b>Capacity:</b> 6-8 Persons	<b>Weight:</b> 29.23lbs/13.26kg
<b>Size:</b> 12*12*7.5ft	<b>Capacity:</b> 8-10 Persons	<b>Weight:</b> 29.1lbs/13.2kg



# Package Contents

1x Pop-Up 6-Sided Gazebo Tent	6x Polyester Rainflys for 6 Sides	3x Solid Fiberglass Poles
4x Windproof Ropes	8x Ground Nails	1x Accessory Organizer Bag
		1x Carrying Bag

# Assembly Steps

①



## Step 1:

Remove your tent from the carrying bag and lay it on the ground.

②



## Step 2:

Unfold the tent and pull on both sides.

③



## Step 3:

Firmly pull the strap attached to the center hub until the roof pops out.

④



## Step 4:

Expand the roof (with one person pulling on two sides of the tent) and push up until the tent is up.

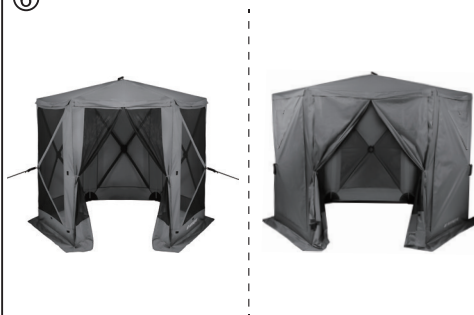
⑤



## Step 5:

Install and secure the support poles.

⑥



## Step 6:

Secure the windproof ropes to the ground nails (Install the sunshade/rainproof cloth based on weather conditions)

## Disassembly Steps

①



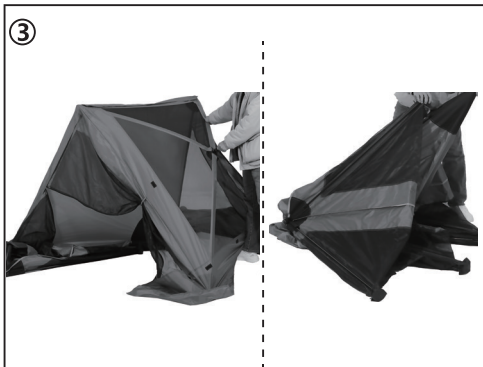
**Step 1:**  
Remove all support poles. Detach the tent's screen. Remove windproof ropes, ground nails and put away.

②



**Step 2:**  
Stand outside the tent. Hold the handles on each side and press inward until all six sides collapse.

③



**Step 3:**  
Press the roof of the tent inward by hands until it collapses. Fold and tie up the tent.

④



**Step 4:**  
Put the tent back in the carrying bag.

## Use/Storage/Care

- Put the gazebo down when not in use to a dry place.
- Wipe the gazebo with a damp cloth, do not use sharp cleaning supplies.
- Mild detergents are recommended for cleaning.
- Careful care and storage are necessary for life and to increase durability.
- The gazebo must absolutely be dry before packing.

## ⚠ Safety Instructions ⚠

The article is not to protect against snow. In winter or during heavy snowfall, the roof snow load must be immediately removed.

---

### Dear Customer

Congratulations on purchasing this quality product. This product conforms to European and national requirements. To meet these requirements and ensure compliance, we ask that you follow these instructions, which include important information regarding the operation and assembly of this product. Please keep these instructions for future use.

We will not assume liability for damage caused by improper use, as well as any consequential damage resulting from such improper use. Similarly, we will not be held liable for property damage or personal injury due to improper operation, ignoring safety instructions, or attempting to make unauthorized changes to the product for safety reasons. Please handle the product with care.

## Safety Instructions

- Read all safety instructions carefully. Failure to comply can cause serious injuries.
  - Only use the gazebo for its intended purpose. We cannot be held responsible for any damage incurred due to improper use or wrong handling.
  - The gazebo is not suitable for connecting to other pavilions.
  - If you build several pavilions, please note that a minimum distance of 3 meters should be maintained between the individual pavilions.
  - Protect your gazebo against the wind when setting it up by using the tent pegs through the support pads into the ground or by anchoring it with screws and dowels to a concrete base.
  - In strong winds, storms, and thunderstorms, remove the roof covering of the gazebo. Never leave the gazebo without its ground attachment and storm braces set up. Dismantle your gazebo if wind speeds are expected to reach 40 km/h or more. Signs of high winds include large branches or trees moving in the wind and the wind being clearly audible.
  - Never use open fire, grills, or patio heaters in or near the gazebo. Stay calm in case of fire. Get away from the gazebo immediately and do not return until the fire brigade allows it.
-

---

## Follow these instructions carefully to avoid injury

- To set up the gazebo, you will need at least 2 people.
- Do not leave the gazebo mounted in strong or upcoming wind, rain, frost, or snow. This can damage the gazebo!
- If a storm is imminent, dismantle the gazebo immediately.
- The construction should take place on level ground. Please avoid sinks or hilly terrain.
- Never use open flames in or near the gazebo (such as barbecues, torches, etc.).
- Be careful not to attach any lighting fixtures near the walls or roof.
- Be careful not to spread your fingers to pinch.
- Your gazebo serves primarily as a sun and privacy screen.
- Water pockets must be emptied as they form!

## Thank You for Your Order

### Dear Customer,

Thank you sincerely for choosing Raynesys! Your trust is a powerful driving force for us to keep moving forward. Raynesys has always been committed to providing users with high-quality and cost-effective products, aiming to solve your problems and make your life more convenient and wonderful.

If you have any questions when using this product, please scan the QR code below and write down your questions, or send your questions to the email below. Our professional service team will be available to assist you.

May your every day be filled with sunshine and joy! Looking forward to your next visit and your sincere suggestions.



E-mail: [cs@iraynesys.com](mailto:cs@iraynesys.com)

---